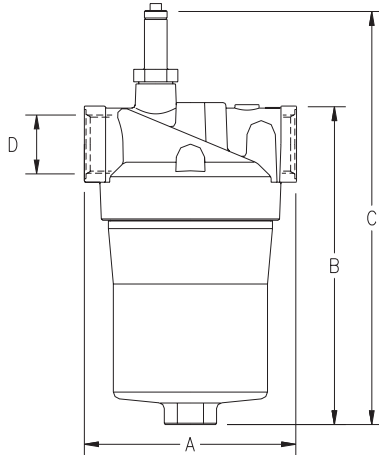




Low Pressure Inline

PI 200 SERIES



- 50 & 80 l/min units rated for operating pressure of 60 bar. 150, 300 & 450 l/min units rated for operating pressure of 25 bar
- Low pressure drop, high retention rate elements
- Supplied standard with visual clogging indicator
- Modular and compact design with BSPP porting
- Suitable for use with HFA, HFB & HFC fluids

part number	part number	part number	part number	part number	part number
50 l/min	A = 109mm	B = 153.5mm	C = 232 mm	D = G¹/₂	Mass = 0.9 kg
PI 2005 - 57				PI 2005 - 68	
PI 2005 - 57/MIC 10		PI 2005 - 57 SMX 3		PI 2005 - 68 SMX VST 3	
PI 2005 - 57/MIC 25		PI 2005 - 57 SMX 6		PI 2005 - 68 SMX VST 6	
PI 2005 - 57/DRG 40		PI 2005 - 57 SMX 10		PI 2005 - 68 SMX VST 10	
PI 2005 - 57/DRG 60		PI 2005 - 57 SMX 25		PI 2005 - 68 SMX VST 25	
80 l/min	A = 95 mm	B = 229.5 mm	C = 308 mm	D = G³/₄	Mass = 1.0 kg
PI 2008 - 57				PI 2008 - 68	
PI 2008 - 57 MIC 10		PI 2008 - 57 SMX 3		PI 2008 - 68 SMX VST 3	
PI 2008 - 57 MIC 25		PI 2008 - 57 SMX 6		PI 2008 - 68 SMX VST 6	
PI 2008 - 57 DRG 40		PI 2008 - 57 SMX 10		PI 2008 - 68 SMX VST 10	
PI 2008 - 57 DRG 60		PI 2008 - 57 SMX 25		PI 2008 - 68 SMX VST 25	
150 l/min	A = 164 mm	B = 230.5 mm	C = 304 mm	D = G1	Mass = 2.1 kg
PI 2015 - 57				PI 2015 - 68	
PI 2015 - 57 MIC 10		PI 2015 - 57 SMX 3		PI 2015 - 68 SMX VST 3	
PI 2015 - 57 MIC 25		PI 2015 - 57 SMX 6		PI 2015 - 68 SMX VST 6	
PI 2015 - 57 DRG 40		PI 2015 - 57 SMX 10		PI 2015 - 68 SMX VST 10	
PI 2015 - 57 DRG 60		PI 2015 - 57 SMX 25		PI 2015 - 68 SMX VST 25	
300 l/min	A = 150 mm	B = 346.5 mm	C = 360 mm	D = G 1¹/₄	Mass = 2.4 kg
PI 2030 - 57				PI 2030 - 68	
PI 2030 - 57 MIC 10		PI 2030 - 57 SMX 3		PI 2030 - 68 SMX VST 3	
PI 2030 - 57 MIC 25		PI 2030 - 57 SMX 6		PI 2030 - 68 SMX VST 6	
PI 2030 - 57 DRG 40		PI 2030 - 57 SMX 10		PI 2030 - 68 SMX VST 10	
PI 2030 - 57 DRG 60		PI 2030 - 57 SMX 25		PI 2030 - 68 SMX VST 25	
450 l/min	A = 150 mm	B = 461.5 mm	C = 535 mm	D = G1¹/₂	Mass = 6.5 kg
PI 2045 - 57				PI 2045 - 68	
PI 2045 - 57 MIC 10		PI 2045 - 57 SMX 3		PI 2045 - 68 SMX VST 3	
PI 2045 - 57 MIC 25		PI 2045 - 57 SMX 6		PI 2045 - 68 SMX VST 6	
PI 2045 - 57 DRG 40		PI 2045 - 57 SMX 10		PI 2045 - 68 SMX VST 10	
PI 2045 - 57 DRG 60		PI 2045 - 57 SMX 25		PI 2045 - 68 SMX VST 25	

filter assemblies filter option

description

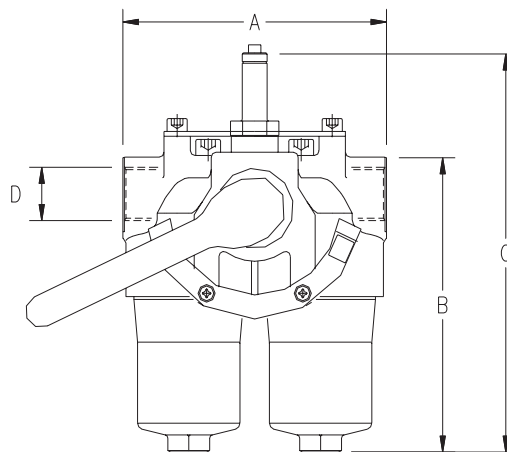
-58 or -69

Optional hirshmann connector to modify visual indicator into visual/electrical indicator

Low Pressure Duplex Inline

PI 210 SERIES

- Ergonomic changeover function, with safety lock and pressure compensation, allowing continual system operation, even during servicing or cartridge replacement
- Units rated for operating pressure of 25 bar - smaller units at 60 bar
- BSPP or SAE 3000 psi flanged porting (add/FL to part number for flanged option. eg. PI 2105-68/FL SMX 10)
- Visual clogging indicator supplied as standard on all units



part number	part number	part number
50 l/min	A = 168mm	B = 200mm
		C = 258 mm
		D = G1
		Mass = 2.6 kg
PI 2105 - 57		PI 2105 - 68
PI 2105 - 57 MIC 10	PI 2105 - 57 SMX 3	PI 2105 - 68 SMX VST 3
PI 2105 - 57 MIC 25	PI 2105 - 57 SMX 6	PI 2105 - 68 SMX VST 6
PI 2105 - 57 DRG 40	PI 2105 - 57 SMX 10	PI 2105 - 68 SMX VST 10
PI 2105 - 57 DRG 60	PI 2105 - 57 SMX 25	PI 2105 - 68 SMX VST 25
80 l/min	A = 168 mm	B = 276 mm
		C = 334 mm
		D = G1
		Mass = 2.9 kg
PI 2108 - 57		PI 2108 - 68
PI 2108 - 57 MIC 10	PI 2108 - 57 SMX 3	PI 2108 - 68 SMX VST 3
PI 2108 - 57 MIC 25	PI 2108 - 57 SMX 6	PI 2108 - 68 SMX VST 6
PI 2108 - 57 DRG 40	PI 2108 - 57 SMX 10	PI 2108 - 68 SMX VST 10
PI 2108 - 57 DRG 60	PI 2108 - 57 SMX 25	PI 2108 - 68 SMX VST 25
150 l/min	A = 280 mm	B = 269 mm
		C = 327 mm
		D = G1½
		Mass = 7 kg
PI 2115 - 57		PI 2115 - 68
PI 2115 - 57 MIC 10	PI 2115 - 57 SMX 3	PI 2115 - 68 SMX VST 3
PI 2115 - 57 MIC 25	PI 2115 - 57 SMX 6	PI 2115 - 68 SMX VST 6
PI 2115 - 57 DRG 40	PI 2115 - 57 SMX 10	PI 2115 - 68 SMX VST 10
PI 2115 - 57 DRG 60	PI 2115 - 57 SMX 25	PI 2115 - 68 SMX VST 25
300 l/min	A = 280 mm	B = 386 mm
		C = 444 mm
		D = G 1½
		Mass = 8 kg
PI 2130 - 57		PI 2130 - 68
PI 2130 - 57 MIC 10	PI 2130 - 57 SMX 3	PI 2130 - 68 SMX VST 3
PI 2130 - 57 MIC 25	PI 2130 - 57 SMX 6	PI 2130 - 68 SMX VST 6
PI 2130 - 57 DRG 40	PI 2130 - 57 SMX 10	PI 2130 - 68 SMX VST 10
PI 2130 - 57 DRG 60	PI 2130 - 57 SMX 25	PI 2130 - 68 SMX VST 25
450 l/min	A = 280 mm	B = 501 mm
		C = 559 mm
		D = G1½
		Mass = 16 kg
PI 2145 - 57		PI 2145 - 68
PI 2145 - 57 MIC 10	PI 2145 - 57 SMX 3	PI 2145 - 68 SMX VST 3
PI 2145 - 57 MIC 25	PI 2145 - 57 SMX 6	PI 2145 - 68 SMX VST 6
PI 2145 - 57 DRG 40	PI 2145 - 57 SMX 10	PI 2145 - 68 SMX VST 10
PI 2145 - 57 DRG 60	PI 2145 - 57 SMX 25	PI 2145 - 68 SMX VST 25

filter assemblies
filter option

description

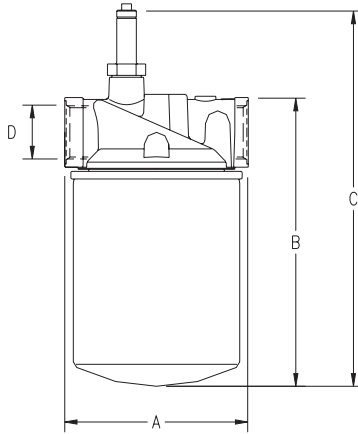
-58 or -69

Optional hirshmann connector to modify visual indicator into visual/electrical indicator



Low Pressure Spin-on Inline

PI 220 & PI 270 SERIES



- Spin on cartridge filter assemblies rated to 10 bar
- PI 270 series incorporates dual-head high flow capabilities
- High retention rate, low pressure drop cartridges
- Supplied with visual clogging indicator and BSPP porting as standard

part number	list price		part number	list price	
20 l/min	A = 109 mm	B = 162.5 mm	C = 241 mm	D = G¹/₂	Mass = 1.5 kg
PI 2202 - 57			PI 2202 - 68		
PI 2202 - 57 MIC 10			PI 2202 - 68 MIC 10		
PI 2202 - 57 SMX 10			PI 2202 - 68 SMX 10		
30 l/min	A = 109 mm	B = 182.5 mm	C = 261 mm	D = G¹/₂	Mass = 1.75 kg
PI 2203 - 57			PI 2203 - 68		
PI 2203 - 57 MIC 10			PI 2203 - 68 MIC 10		
PI 2203 - 57 SMX 10			PI 2203 - 68 SMX 10		
60 l/min	A = 95 mm	B = 249.5 mm	C = 328 mm	D = G³/₄	Mass = 2.25 kg
PI 2205 - 57			PI 2205 - 68		
PI 2205 - 57 MIC 10			PI 2205 - 68 MIC 10		
PI 2205 - 57 SMX 10			PI 2205 - 68 SMX 10		
100 l/min	A = 150 mm	B = 228 mm	C = 302 mm	D = G¹/₄	Mass = 3.9 kg
PI 2210 - 57			PI 2210 - 68		
PI 2210 - 57 MIC 10			PI 2210 - 68 MIC 10		
PI 2210 - 57 SMX 10			PI 2210 - 68 SMX 10		
140 l/min	A = 150 mm	B = 368.5 mm	C = 442 mm	D = G¹/₄	Mass = 5.3 kg
PI 2214 - 57			PI 2214 - 68		
PI 2214 - 57 MIC 10			PI 2214 - 68 MIC 10		
PI 2214 - 57 SMX 10			PI 2214 - 68 SMX 10		
250 l/min	A = 300 mm	B = 240 mm	C = 284 mm	D = G¹/₂	Mass = 3.7 kg
PI 2720 - 57			PI 2720 - 68		
PI 2720 - 57 MIC 10			PI 2720 - 68 MIC 10		
PI 2720 - 57 SMX 10			PI 2720 - 68 SMX 10		
280 l/min	A = 300 mm	B = 377 mm	C = 421 mm	D = G¹/₂	Mass = 4 kg
PI 2728 - 57			PI 2728 - 68		
PI 2728 - 57 MIC 10			PI 2728 - 68 MIC 10		
PI 2728 - 57 SMX 10			PI 2728 - 68 SMX 10		

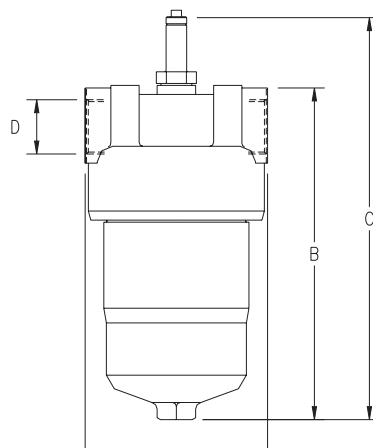
FILTER ASSEMBLIES

filter assemblies filter option	description
-58 or -69	Optional hirshmann connector to modify visual indicator into visual/electrical indicator

Medium/High Pressure Inline

PI 360 SERIES

- 50, 80 & 110 l/min units rated for operating pressure of 315 bar . 150, 300 & 450 l/min units rated for operating pressure of 210 bar
- Visual indicator supplied as standard on non by-passed filters, optional on by-passed models. All models with BSPP porting
- Low pressure drop, high retention rate elements



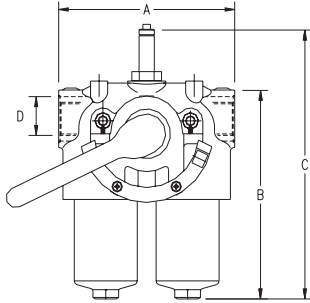
part number	part number	part number
50 l/min	A = 89.5 mm	B = 187mm
PI 3605 - 11	PI 3605 - 11 SMX 3	PI 3605 - 14
PI 3605 - 11 MIC 10	PI 3605 - 11 SMX 6	PI 3605 - 14 SMX VST 3
PI 3605 - 11 MIC 25	PI 3605 - 11 SMX 10	PI 3605 - 14 SMX VST 6
PI 3605 - 11 DRG 40	PI 3605 - 11 SMX 25	PI 3605 - 14 SMX VST 10
PI 3605 - 11 DRG 60		PI 3605 - 14 SMX VST 25
80 l/min	A = 89.5 mm	B = 265 mm
PI 3608 - 11	PI 3608 - 11 SMX 3	PI 3608 - 14
PI 3608 - 11 MIC 10	PI 3608 - 11 SMX 6	PI 3608 - 14 SMX VST 3
PI 3608 - 11 MIC 25	PI 3608 - 11 SMX 10	PI 3608 - 14 SMX VST 6
PI 3608 - 11 DRG 40	PI 3608 - 11 SMX 25	PI 3608 - 14 SMX VST 10
PI 3608 - 11 DRG 60		PI 3608 - 14 SMX VST 25
110 l/min	A = 89.5 mm	B = 341 mm
PI 3611 - 11	PI 3611 - 11 SMX 3	PI 3611 - 14
PI 3611 - 11 MIC 10	PI 3611 - 11 SMX 6	PI 3611 - 14 SMX VST 3
PI 3611 - 11 MIC 25	PI 3611 - 11 SMX 10	PI 3611 - 14 SMX VST 6
PI 3611 - 11 DRG 40	PI 3611 - 11 SMX 25	PI 3611 - 14 SMX VST 10
PI 3611 - 11 DRG 60		PI 3611 - 14 SMX VST 25
150 l/min	A = 142 mm	B = 259 mm
PI 3615 - 11	PI 3615 - 11 SMX 3	PI 3615 - 14
PI 3615 - 11 MIC 10	PI 3615 - 11 SMX 6	PI 3615 - 14 SMX VST 3
PI 3615 - 11 MIC 25	PI 3615 - 11 SMX 10	PI 3615 - 14 SMX VST 6
PI 3615 - 11 DRG 40	PI 3615 - 11 SMX 25	PI 3615 - 14 SMX VST 10
PI 3615 - 11 DRG 60		PI 3615 - 14 SMX VST 25
300 l/min	A = 142 mm	B = 384 mm
PI 3630 - 11	PI 3630 - 11 SMX 3	PI 3630 - 14
PI 3630 - 11 MIC 10	PI 3630 - 11 SMX 6	PI 3630 - 14 SMX VST 3
PI 3630 - 11 MIC 25	PI 3630 - 11 SMX 10	PI 3630 - 14 SMX VST 6
PI 3630 - 11 DRG 40	PI 3630 - 11 SMX 25	PI 3630 - 14 SMX VST 10
PI 3630 - 11 DRG 60		PI 3630 - 14 SMX VST 25

filter assemblies filter option	description
-12	Optional visual indicator for -11 filter
-13	Optional visual/electrical indicator for -11 filter
-15	Optional hirshmann connector to modify visual indicator into visual/electrical indicator -14 filter



Medium/High Pressure Duplex Inline

PI 370 SERIES



- Ergonomic changeover function with safety lock and pressure compensation
- All units rated for operating pressure of 210 bar
- Visual indicator supplied as standard on all filters
- BSPP or SAE flanged porting (add/FL to part number for flanged option)

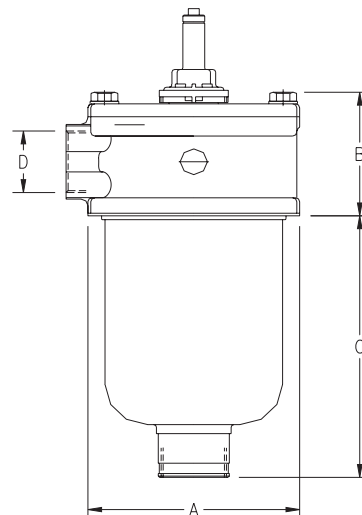
part number	part number	part number
50 l/min	A = 182 mm	B = 219 mm
C = 271 mm	D = G1	Mass = 10.5 kg
PI 3705 - 12	PI 3705 - 12 SMX 3	PI 3705 - 14
PI 3705 - 12 MIC 10	PI 3705 - 12 SMX 6	PI 3705 - 14 SMX VST 3
PI 3705 - 12 MIC 25	PI 3705 - 12 SMX 10	PI 3705 - 14 SMX VST 6
PI 3705 - 12 DRG 40	PI 3705 - 12 SMX 25	PI 3705 - 14 SMX VST 10
PI 3705 - 12 DRG 60		PI 3705 - 14 SMX VST 25
80 l/min	A = 182 mm	B = 294 mm
C = 346 mm	D = G1	Mass = 12 kg
PI 3708 - 12	PI 3708 - 12 SMX 3	PI 3708 - 14
PI 3708 - 12 MIC 10	PI 3708 - 12 SMX 6	PI 3708 - 14 SMX VST 3
PI 3708 - 12 MIC 25	PI 3708 - 12 SMX 10	PI 3708 - 14 SMX VST 6
PI 3708 - 12 DRG 40	PI 3708 - 12 SMX 25	PI 3708 - 14 SMX VST 10
PI 3708 - 12 DRG 60		PI 3708 - 14 SMX VST 25
110 l/min	A = 182 mm	B = 370 mm
C = 422 mm	D = G1	Mass = 14 kg
PI 3711 - 12	PI 3711 - 12 SMX 3	PI 3711 - 14
PI 7611 - 12 MIC 10	PI 3711 - 12 SMX 6	PI 3711 - 14 SMX VST 3
PI 3711 - 12 MIC 25	PI 3711 - 12 SMX 10	PI 3711 - 14 SMX VST 6
PI 3711 - 12 DRG 40	PI 3711 - 12 SMX 25	PI 3711 - 14 SMX VST 10
PI 3711 - 12 DRG 60		PI 3711 - 14 SMX VST 25
150 l/min	A = 280 mm	B = 302 mm
C = 354 mm	D = G1½	Mass = 29.5 kg
PI 3715 - 12	PI 3715 - 12 SMX 3	PI 3715 - 14
PI 3715 - 12 MIC 10	PI 3715 - 12 SMX 6	PI 3715 - 14 SMX VST 3
PI 3715 - 12 MIC 25	PI 3715 - 12 SMX 10	PI 3715 - 14 SMX VST 6
PI 3715 - 12 DRG 40	PI 3715 - 12 SMX 25	PI 3715 - 14 SMX VST 10
PI 3715 - 12 DRG 60		PI 3715 - 14 SMX VST 25
300 l/min	A = 280 mm	B = 427 mm
C = 479 mm	D = G1½	Mass = 35 kg
PI 3730 - 12	PI 3730 - 12 SMX 3	PI 3730 - 14
PI 3730 - 12 MIC 10	PI 3730 - 12 SMX 6	PI 3730 - 14 SMX VST 3
PI 3730 - 12 MIC 25	PI 3730 - 12 SMX 10	PI 3730 - 14 SMX VST 6
PI 3730 - 12 DRG 40	PI 3730 - 12 SMX 25	PI 3730 - 14 SMX VST 10
PI 3730 - 12 DRG 60		PI 3730 - 14 SMX VST 25
450 l/min	A = 280 mm	B = 543 mm
C = 595 mm	D = G1½	Mass = 40 kg
PI 3745 - 12	PI 3745 - 12 SMX 3	PI 3745 - 14
PI 3745 - 12 MIC 10	PI 3745 - 12 SMX 6	PI 3745 - 14 SMX VST 3
PI 3745 - 12 MIC 25	PI 3745 - 12 SMX 10	PI 3745 - 14 SMX VST 6
PI 3745 - 12 DRG 40	PI 3745 - 12 SMX 25	PI 3745 - 14 SMX VST 10
PI 3745 - 12 DRG 60		PI 3745 - 14 SMX VST 25

filter assemblies filter option	description
-15	Optional hirshmann connector to modify visual indicator into visual/electrical indicator - 14 filter

Tank Top Mounted

PI 500 SERIES

- Aluminium headed filter with plastic bowl (60-160 l/min) or steel bowl (160-1000 l/min).
- All units rated to 10 bar and designed for tank top mounting for return line flow
- High retention rate, low pressure drop elements
- BSPP porting for models up to 400 l/min, SAE flange for 630 -1000 l/min
- Optional combined breather available upon request (63 to 100l/min)



part number	part number	part number	part number	part number	part number
63 l/min	A = 115 mm	B = 77mm	C = 191 mm	D = G1	Mass = 0.7 kg
PI 50006 - 57					
PI 50006 - 57 MIC 10		PI 50006 - 57 SMX 3		PI 50006 - 57 SMX 10	
PI 50006 - 57 MIC 25		PI 50006 - 57 SMX 6		PI 50006 - 57 SMX 25	
100 l/min	A = 115 mm	B = 77 mm	C = 281 mm	D = G1	Mass = 0.75 kg
PI 50010 - 57					
PI 50010 - 57 MIC 10		PI 50010 - 57 SMX 3		PI 50010 - 57 SMX 10	
PI 50010 - 57 MIC 25		PI 50010 - 57 SMX 6		PI 50010 - 57 SMX 25	
160 l/min	A = 151 mm	B = 94 mm	C = 207 mm	D = G1½	Mass = 2.8 kg
PI 50016 - 57					
PI 50016 - 57 MIC 10		PI 50016 - 57 SMX 3		PI 50016 - 57 SMX 10	
PI 50016 - 57 MIC 25		PI 50016 - 57 SMX 6		PI 50016 - 57 SMX 25	
250 l/min	A = 151 mm	B = 94 mm	C = 297 mm	D = G1½	Mass = 4.2 kg
PI 50025 - 57					
PI 50025 - 57 MIC 10		PI 50025 - 57 SMX 3		PI 50025 - 57 SMX 10	
PI 50025 - 57 MIC 25		PI 50025 - 57 SMX 6		PI 50025 - 57 SMX 25	
400 l/min	A = 180 mm	B = 118 mm	C = 309 mm	D = DN 51	Mass = 6.4 kg
PI 50040 - 57					
PI 50040 - 57 MIC 10		PI 50040 - 57 SMX 3		PI 50040 - 57 SMX 10	
PI 50040 - 57 MIC 25		PI 50040 - 57 SMX 6		PI 50040 - 57 SMX 25	
630 l/min	A = 180 mm	B = 118 mm	C = 459 mm	D = DN 64	Mass = 7.2 kg
PI 50063 - 57					
PI 50063 - 57 MIC 10		PI 50063 - 57 SMX 3		PI 50063 - 57 SMX 10	
PI 50063 - 57 MIC 25		PI 50063 - 57 SMX 6		PI 50063 - 57 SMX 25	
1000 l/min	A = 207 mm	B = 149 mm	C = 430 mm	D = DN 76	Mass = 10.6 kg
PI 50100 - 57					
PI 50100 - 57 MIC 10		PI 50100 - 57 SMX 3		PI 50100 - 57 SMX 10	
PI 50100 - 57 MIC 25		PI 50100 - 57 SMX 6		PI 50100 - 57 SMX 25	

filter assemblies filter option	description
-58	Optional hirshmann connector to modify visual indicator into visual/electrical indicator

Pressure Elements

PI 200, 210, 360, 370 & 420 SERIES

- SMX 'beta' elements are designed to exceed ISO 4572 filtration requirements. All SMX elements satisfy $\beta_{x \geq 75}$ due to their multiple filtering layers with consistent pore sizing providing over 98.7% level of filtration
- MIC elements are constructed from cellulose fibre filtering layers and are classed as 'nominal' filters and achieve filtration levels of 95%
- DRG elements are cleanable wire mesh filters that may be classed as 'nominal' filters
- Every Mahle SMX element is quality tested using the bubble point test as per ISO 2942
- Mahle elements display exceptional retention rates with low pressure drops due to their large filtration areas, leading to extended service life

part number	part number	part number
50 l/min		
PI 1105 MIC 10	PI2105 SMX 3	PI 2205 SMX VST 3
PI 1005 MIC 25	PI 5105 SMX 6	PI 5205 SMX VST 6
PI 8305 DRG 40	PI 3105 SMX 10	PI 3205 SMX VST 10
PI 8405 DRG 60	PI 4105 SMX 25	PI 4205 SMX VST 25
80 l/min		
PI 1108 MIC 10	PI 2108 SMX 3	PI 2208 SMX VST 3
PI 1008 MIC 25	PI 5108 SMX 6	PI 5208 SMX VST 6
PI 8308 DRG 40	PI 3108 SMX 10	PI 3208 SMX VST 10
PI 8408 DRG 60	PI 4108 SMX 25	PI 4208 SMX VST 25
110 l/min		
PI 1111 MIC 10	PI 2111 SMX 3	PI 2211 SMX VST 3
PI 1011 MIC 25	PI 5111 SMX 6	PI 5211 SMX VST 6
PI 8311 DRG 40	PI 3111 SMX 10	PI 3211 SMX VST 10
PI 8411 DRG 60	PI 4111 SMX 25	PI 4211 SMX VST 25
150 l/min		
PI 1115 MIC 10	PI 2115 SMX 3	PI 2215 SMX VST 3
PI 1015 MIC 25	PI 5115 SMX 6	PI 5215 SMX VST 6
PI 8315 DRG 40	PI 3115 SMX 10	PI 3215 SMX VST 10
PI 8415 DRG 60	PI 4115 SMX 25	PI 4215 SMX VST 25
300 l/min		
PI 1130 MIC 10	PI 2130 SMX 3	PI 2230 SMX VST 3
PI 1030 MIC 25	PI 5130 SMX 6	PI 5230 SMX VST 6
PI 8330 DRG 40	PI 3130 SMX 10	PI 3230 SMX VST 10
PI 8430 DRG 60	PI 4130 SMX 25	PI 4230 SMX VST 25
450 l/min		
PI 1145 MIC 10	PI 2145 SMX 3	PI 2245 SMX VST 3
PI 1045 MIC 25	PI 5145 SMX 6	PI 5245 SMX VST 6
PI 8345 DRG 40	PI 3145 SMX 10	PI 3245 SMX VST 10
PI 8445 DRG 60	PI 4145 SMX 25	PI 4245 SMX VST 25



Return Elements

PI 500 SERIES

- Mahle return line filters are designed to prevent unnecessary back-pressure in the system. Large filtration areas are utilised encouraging long service life even with high retention rates
- SMX 'Beta' elements are designed to exceed ISO 4572 filtration requirements. All SMX elements satisfy $\beta_{x \geq 75}$ due to their multiple filtering layers with consistent pore size distributions
- MIC elements are constructed from cellulose fibre filtering layers and are classed as 'nominal' filters and achieve filtration levels of 95%

part number	part number	part number
40 l/min		
PI 13004 MIC 10	PI 21004 SMX 3	PI 23004 SMX 10
PI 15004 MIC 25	PI 22004 SMX 6	PI 25004 SMX 25
63 l/min		
PI 13006 MIC 10	PI 21006 SMX 3	PI 23006 SMX 10
PI 15006 MIC 25	PI 22006 SMX 6	PI 25006 SMX 25
100 l/min		
PI 13010 MIC 10	PI 21010 SMX 3	PI 23010 SMX 10
PI 15010 MIC 25	PI 22010 SMX 6	PI 25010 SMX 25
160 l/min		
PI 13016 MIC 10	PI 21016 SMX 3	PI 23016 SMX 10
PI 15016 MIC 25	PI 22016 SMX 6	PI 25016 SMX 25
250 l/min		
PI 13025 MIC 10	PI 21025 SMX 3	PI 23025 SMX 10
PI 15025 MIC 25	PI 22025 SMX 6	PI 25025 SMX 25
400 l/min		
PI 13040 MIC 10	PI 21040 SMX 3	PI 23040 SMX 10
PI 15040 MIC 25	PI 22040 SMX 6	PI 25040 SMX 25
630 l/min		
PI 13063 MIC 10	PI 21063 SMX 3	PI 23063 SMX 10
PI 15063 MIC 25	PI 22063 SMX 6	PI 25063 SMX 25
1000 l/min		
PI 13100 MIC 10	PI 21100 SMX 3	PI 23100 SMX 10
PI 15100 MIC 25	PI 22100 SMX 6	PI 25100 SMX 25