



WEBTEC

WEBTEC PRODUCTS LIMITED

Nuffield Road, St. Ives, Cambs., PE27 3LZ, UK
Tel: +44(0)1480 397400 Fax: +44(0)1480 466555
E-mail: sales@webtec.co.uk

<http://www.webtec.co.uk>

Low Cost In-Line Flow Indicator Test Kit

- 30 lpm
- 60 lpm
- 120 lpm
- 180 lpm

- Up to 420 bar



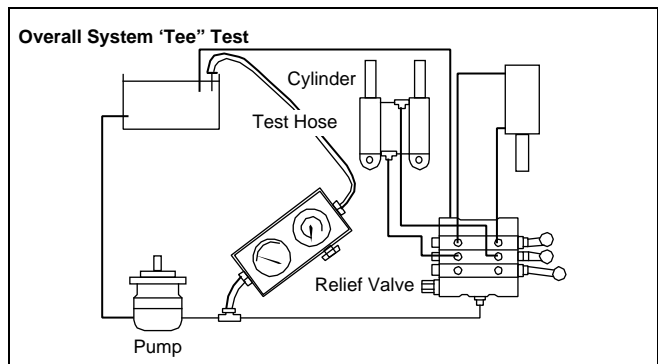
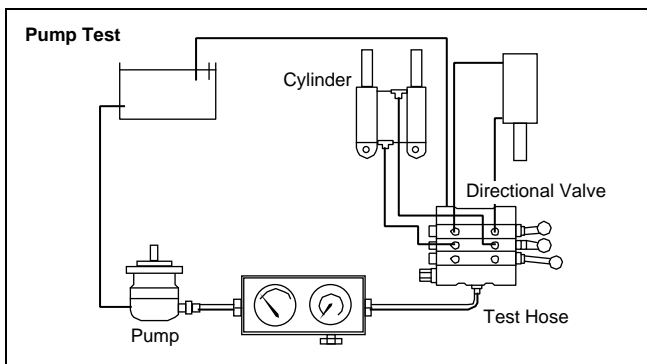
The 'In Line Flow Indicator Test Kit' comprises a direct acting flow indicator with built in thermometer, a loading valve and a pressure gauge all built into a strong steel case with a removable lid. This kit provides the ideal solution for servicing and commissioning hydraulic circuits on agricultural and other mobile equipment.

The unit is self contained and requires no electrical power. The dials are clear and easy to read. Installation is extremely simple and the test kit can be connected into either the pressure or return lines. The loading valve and pressure gauge allow a progressive build up of system pressure in complete safety.

The test kit provides the service engineer with quick, accurate and simple performance testing of pumps, valves and other aspects of hydraulic circuits.

Features

- **LOW** cost, rugged construction
- **MEASURES** Flow, Pressure, Temperature
- **ACCURACY** within 4% FSD
- **LARGE** clear easy to read dials
- **SMOOTH** pressure control up to 420 bar 6000 psi
- **WIDE** range of operation, 2 to 180 lpm (1/2 to 40 gpm)
- **SAFE** to use, Internal oil by-pass protect system and operator against accidental over-pressure.



Another quality product from the Webster Range

Specifications

Model No.	Part No	Flow Range		Max.Working Pressure		Temperature Range	
		lpm	gpm	bar	psi	°C	°F
FIK 30 ABOT	FT5594 - 01	2 - 30	0.5 - 8	420	6000	10 - 80	50 - 180
FIK 60 ABOT	FT5594 - 02	3 - 60	0.8 - 14	420	6000	10 - 80	50 - 180
FIK120 ABOT	FT5594 - 03	5 - 120	1.2 - 26	420	6000	10 - 80	50 - 180
FIK180 ABOT	FT5594 - 09	8 - 180	2.0 - 40	420	6000	10 - 80	50 - 180

Connections

By flexible hoses (1/2 - 1 metre recommended length)
Inlet Port: 3/4" BSPF
Outlet Port: 1/2" BSPF

Adaptors

Fittings are supplied as standard to provide inlet and outlet connections.

Models FIK 30 ABOT 1/2" BSPF Male.

Models FIK 60 ABOT 1/2" BSPF Male.

Models FIK 120 ABOT 3/4" BSPF Male.

Models FIK 180 ABOT 3/4" BSPF Male.

Other adaptor fittings available. Consult Sales Office.

Measurement and Indication

Flow

Measured by a tapered metering piston moving within a fixed, sharp edged orifice, designed to minimise the effect of changes in temperature and viscosity. The piston movement is proportional to the change in flow rate.

Accuracy: ± 4% of full scale.

Pressure Drop

FIK 30 ABOT 3 bar FIK 60 ABOT 5 bar
FIK 120ABOT 15 bar FIK 180 ABOT 25 bar

At full flow with oil viscosity of 28 centistokes

Pressure

Glycerine filled 63mm (2 1/2") pressure gauge 0 - 420 bar (0 - 6000 psi) gives a continuous reading of system pressure.

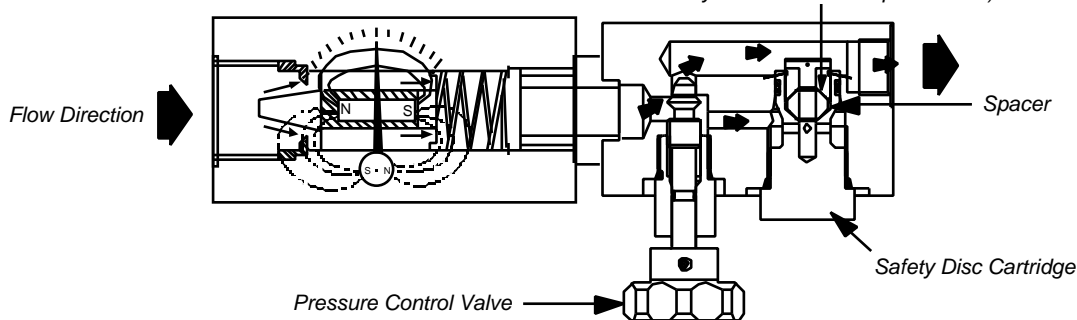
Accuracy: ± 1.6% of full scale.

Temperature

Indicated in °C and °F by a thermometer set in rubber compound and built into the flowblock to measure temperature changes in the fluid passage.

Accuracy: ± 2 °C

Two Safety Discs. max 6000 psi 420 bar)



Construction

Flow Block

Solid High tensile flow block houses a metering piston which moves against a calibrated spring. The piston is magnetically coupled to a rotary pointer to provide a direct reading of flow on a clear 63mm (2 1/2") diameter flow scale calibrated in lpm and gpm. Both flow and temperature scales are shielded behind impact resistant windows. The whole unit is fully sealed and very strong.

Case

The complete unit is built into a strong steel case which provides full protection against accidental damage during testing. A detachable lid and end plate allow easy removal to replace safety discs.

Dimensions / Weight

350 x 125 x 115mm (13.75 x 5 x 4.5 inches)
4.5 kg (10 lbs)

Loading Valve and Pressure Gauge

The HV1 00 loading valve is connected directly to the flow block and a 420 bar, 6000 psi pressure gauge is mounted in the inlet section of the loading valve. The valve is easy to operate and, combined with the pressure gauge, allows sensitive and progressive control of system pressure throughout the working range.

Safety Discs

Protection against over pressure is provided by two internal safety discs which relieve at 440 bar, 6400 psi without external spillage. The safety discs are housed in a cartridge and are easily replaceable

General

Other Applications.

Aluminium free units suitable for Mining, Offshore and High Pressure Water applications are available. Consult Sales Office.

How to order

Specify Model from table above together with any adaptor fitting required. Webster Model FIK 120 ABOT is a 5 - 120 lpm, 1.2 - 26 gpm test kit suitable for up to 420 bar, 6000 psi operation.



Certificate No.8242