



WEBTEC

WEBTEC PRODUCTS LIMITED

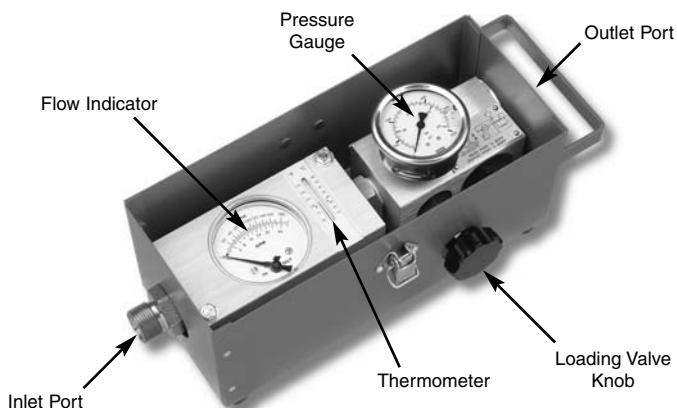
FIK Flow Test Kits

**30 lpm, 60 lpm,
120 lpm, 180 lpm**



www.webtec.co.uk

Operating and Service Instructions



FIK Series Hydraulic Flow Test Kit

FIK Series Flow Test Kits have been designed for testing the full range of Agricultural and Mobile Machinery. The Kit is fitted with Male Adapters for connecting two hoses. Adapters are available to suit most applications. Consult Sales Office for details.

The FIK Flow Test Kit comprises the following items built into a steel box.

- Flow Indicator with 30, 60, 120 or 180 lpm flow scale and thermometer scale 10 - 80°C (50 - 180°F).
- Loading valve built-in safety discs and glycerine filled pressure gauge. The valve is easy to turn and gives progressive control of system pressure loading.
- Safety discs - Four spare discs are supplied with the kit. Specify FT338-6 440 bar 6400 psi for replacements. Note these discs are colour coded Red for easy identification. Other safety discs with lower pressure ratings are available. Consult Sales Office for details.

FIK Overview:

Model No.	Order No.	Flow range	Max. Pressure	Temperature range
FIK 30 ABOT	FT 5594-01	2 - 30 lpm	420 bar	10 - 80 °C
FIK 60 ABOT	FT 5594-02	3 - 60 lpm	420 bar	10 - 80 °C
FIK 120 ABOT	FT 5594-03	5 - 120 lpm	420 bar	10 - 80 °C
FIK 180 ABOT	FT 5594-09	8 - 180 lpm	420 bar	10 - 80 °C

Connections

By flexible hoses
 (0,5-1 m recommended length)
 Inlet Port: 3/4" R (BSPF)
 Outlet Port: 1/2" R (BSPF)

Adapters

Fittings are supplied as standard to provide inlet and outlet connections.
 Models FIK 30 & 60 ABOT 1/2" R (BSPF)
 Models FIK 120 & 180 ABOT 3/4" R (BSPF)

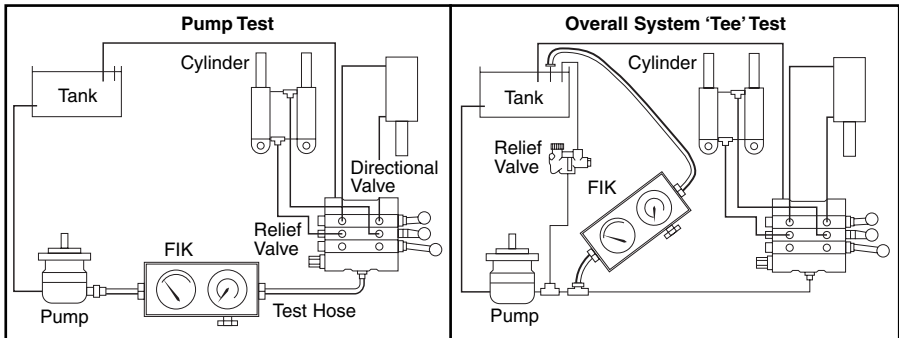
Connect the Test Kit into the Hydraulic System as required using two 1-2 metre long hoses. Ensure that the flow through the Test Kit is in the direction of the arrows on the Flow Indicator dial.

IMPORTANT: The Flow Indicator can not accept reverse flow and care should be taken at all times especially on circuits where flow can be reversed i.e. cylinder and motor circuits.

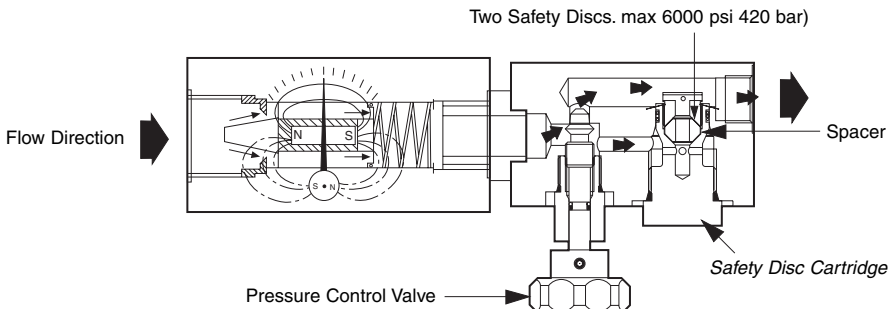
Instructions for using the Flow Test Kit:

1. Open Loading Valve (Rotate counter-clockwise)
2. Start pump momentarily to ensure that oil flows freely through the hydraulic system, then run pump at maximum speed. Do not change pump speed while using the Loading Valve.
3. Slowly close Test Unit Loading Valve to develop desired pressure. Run the machine until normal operating temperature is reached i.e. Typically 45 - 60°C (110 - 140°F).
4. Open the Tester Loading Valve to read the flow at minimum pressure.
5. Close Loading Valve slowly to increase pressure and note reduction of flow as the pressure is increased to maximum pump pressure to determine pump condition.

Typical Tests

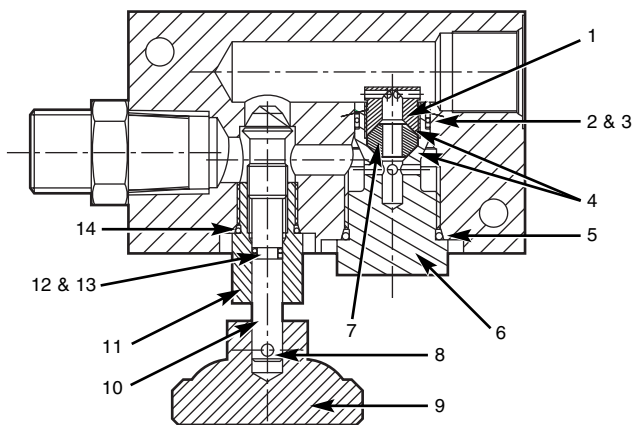


Replacement of Safety Discs



1. Remove load valve with 7/8" AF spanner.
2. Remove 4 screws retaining the box end plate.
3. Remove 2 bolts 10mm securing the flow indicator in the case.
4. The complete tester assembly can now be removed from the case.
5. Remove safety disc cartridge with a 1-3/8" AF spanner.
6. Remove the internal disc holder in the cartridge with an 11/16" AF spanner.
7. Remove the two spent discs and fit new ORIGINAL WEBSTER discs, one on each side of the spacer.
8. Tighten disc holder to 40 lb. ft. (55 Nm).
9. Check the seal before you replace the entire cartridge assembly in valve body.

FIK Flow Test Kit Spares List



Part No.	Description	Quantity	Item	Part No.	Description	Quantity	Item
FT 1203-6	HV100 Loading Valve	1		IFB12/	Dowty Seal (3/4 BSP) *	1	
F29540-47	Socket Set Screw (PM)	1	8	Seal Kit includes items *			
FT 1205	Spindle	1	10	FT 1375-6	Pressure Gauge	1	
FT 1206	Adapter Head	1	11	FT 323	Feet and Screws FT 6119	4	
FT 1230	Burst Disc Holder	1	6	FT 5758-**	Flow Indicator (**state size)	1	
FT 1232	Machined Black Knob	1	9	FT 5625	M6 Bolts 65	2	
FT 1234-010	Backup Ring PTFE (PM) *	1	12	FT 5593	Box Assy	1	
FT 1234-019	Backup Ring PTFE (PM) *	2	3	FT 5368	Box Screws M3x6 long C/Sink	4	
FT 1244	Spacer	1	7	IAB08/B08S	Adapter 1/2 x 1/2 PSP M/M*	1	
FT 1257	Disc Holder	1	1	IAB12/B08S	Adapter 3/4 x 1/2 PSP M/M*	1	
FT 1402	Label	1		IFB08/----	Seal 1/2 BSP	1	
FT 1466-1	Screw (PM)	4		IFB12/----	Seal 3/4 BSP	1	
FT 2579-010	O-Ring BS010 (90) *	1	13	* FIK 30 ABOT & FIK 60 ABOT only			
FT 2579-019	O-Ring BS019 (90) *	1	2				
FT 2579-914	O-Ring BS914 (90) *	1	5				
FT 2579-908	O-Ring BS908 (90) *	1	14				
FT 338-6	Burst Disc 6000 psi/420 bar	2	4				
IAB12/N08S	3/4 BSP x 1/2 NPT M/M Adapter	1					



Nuffield Road, St. Ives, Cambridgeshire, PE27 3LZ, UK
Tel: +44(0)1480 397 400 Fax: +44(0)1480 466 555



E-mail: sales@webtec.co.uk
See us at: www.webtec.co.uk



Webtec Products Limited reserve the right to make improvements and changes to the specification without notice.



Distributor

Oil Solutions

Phone 0421 336 009

Fax 03 9012 4332

International

Phone 61 421 336 009

Fax 61 3 9012 4332

sales@oilsolutions.com.au

www.oilsolutions.com.au

PO Box 653 Castlemaine Australia 3450